

Vigil lights the night on World AIDS Day



FACT Bucks County President Louis Licitra lights Paul Murphy's and Andrea Helander's vigil candles.



Supporters make their way across the bridge into New Hope during the candlelight vigil and walk.

A candlelight vigil and blessing, held in honor of friends and family who have passed away from AIDS, took place Dec. 1 in the parking lot of Lambertville Station in Lambertville, N.J.

Hosted by FACT Bucks County in recognition of World AIDS Day, the event also served to remind people of those living with HIV/AIDS and to show support for AIDS education and research.

After the program, participants walked over the bridge to New Hope for a wine and cheese reception at Gallery Piquel.

Photographs by Gordon Nieburg



The Rev. Michael Ruk of St. Philip's Episcopal Church recites a blessing in remembrance of friends and family members that have passed away and in support of those living with HIV/AIDS.

Toys under the tree

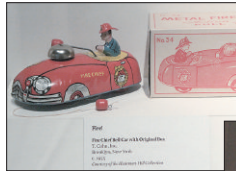
Under the Tree: A Century of Holiday Trees and Toys, a display of vintage toys from the 1860s to the 1960s, continues at the Mercer Museum in Doylestown through Jan. 13.

The exhibit is an annual museum

tradition that captures the excitement of Christmas from a child's point of view. Amidst trees decorated to the tastes of those earlier eras, visitors discover an array of toys and games like those that once delighted children on Christmas

mornings.

Items are from the Mercer Museum and major private collections, with new objects on view each year. Toys of tin, wood, cardboard and iron are included, and some still have their original boxes.



This circa 1955 metal fire chief pull toy with the original box is courtesy of the Hausman-Hill collection.

These Disney toys are from the Hausman-Hill collection.

Photographs by Rick Gould



"I remember who he is."

Personal Care at The Garden
 – memory care that highlights the individual through a unique portrait approach.
Only at Pine Run.

Familiarity means everything when Alzheimer's and related dementia is the diagnosis. Routine comforts and familiar joys reassure and help make each day a good day for residents and their family. Learn more. Recognize the significance of crisp table linens, flowers and unconfined space. Appreciate the framework supporting your loved one where the best care feels like home.

For more information call:
Melody Moore, R.N. at 215.340.5233

Not-for-profit, award-winning Pine Run community is owned and operated by Doylestown Hospital.

Uniquely Doylestown. Definitely Pine Run.

Pine Run Health Center

777 Ferry Road, Doylestown, PA 18901
 (across from the Shrine of Czestochowa)
215.340.5233 • www.pinerun.org

Doylestown Hospital

panpha

Thinking about how to save on heating oil costs?

Think Petro!

Find out why more of your neighbors choose Petro, making us the #1 home heating oil company in the country.

USE PROPANE IN YOUR HOME?

Count on us for all of your propane equipment installation and service needs — with no extra equipment rental fees or delivery charges.

Heating & Air Conditioning Services

CALL TODAY FOR SPECIAL OFFERS!

877.895.0579 petro.com

HEATING OIL | PROPANE | NATURAL GAS | PLUMBING
 AC | HOME SECURITY | CHIMNEY | COMMERCIAL FUEL DELIVERY

Not all services available in all areas. Additional terms and conditions may apply.
 NJ Lic. No. NJ13VH03882400. PA Lic. No. 020599. ©2012 Petro. P. 12569